



559/560 Series Fuse Blocks for TE5/TR5 Type Fuses



559 Series Holder

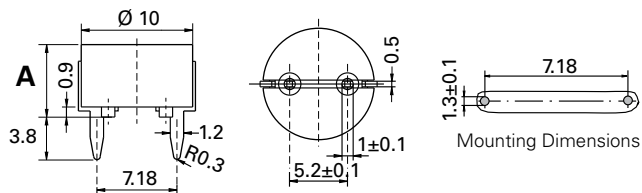
560 Series Holder

Agency Approvals

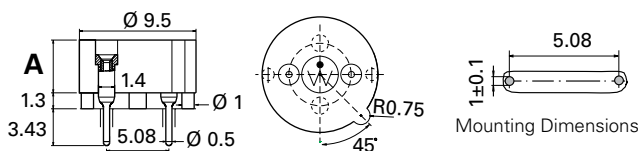
Agency	Agency File Number	
	559 Series	560 Series
	N/A	40041024
	N/A	E14721

Dimensions units in mm

559 Series



560 Series



Product Characteristics

	559 Series (Lead Free)	560 Series
Compatible Fuses	TR5/TE5	TR5/TE5
Materials	Holder: Black Thermoplastic, UL94 V-0 Metal Parts: Copper alloy; solderable tinned	Holder: Thermoplastic, UL 94 V-0
Electrical Data (23°C)	Rated Voltage: 250V Max. Current/Power: 6.3 A /1.6 W	
Mounting	PC Board, 7.18 mm pin spacing	PC Board, 5.08 mm pin spacing
Solderability	max. 260 °C, 10 s (Wave)	
Minimum Cross Section	Conducting path - 0.1 mm ²	
Unit Weight	0.63 g	0,4 g

Ordering Information

Ordering Number	"A" Height Options	Packaging
55900000001	6.5 mm (code 0001)	1000 Pcs Bulk
55900008011	10 mm (code 8011)	100 Pcs Bulk
56000001319	3.0 mm (code 1319)	500 Pcs Bulk
56000001009	4.3 mm (code 1009)	500 Pcs Bulk
56000001019	4.3 mm (code 1019)	1000 Pcs Bulk

Additional Information



**Datasheet
559 Series**



**Resources
559 Series**



**Samples
559 Series**



**Datasheet
560 Series**



**Resources
560 Series**



**Samples
560 Series**

Disclaimer Notice - Information furnished is believed to be accurate and reliable. However, users should independently evaluate the suitability of and test each product selected for their own applications. Littelfuse products are not designed for, and may not be used in, all applications. Read complete Disclaimer Notice at: www.littelfuse.com/disclaimer-electronics.